

LENA RESERVE

Directions:

OPTION 1

- From Route 82, take Clark Hill Road to the junction of Tater Hill Road.
- Turn right onto Tater Hill (marked as a dead end) and then turn left onto Babcock Road.
- Proceed to the end of the gravel roadway and the parking lot will be on your left.

OPTION 2

- From Millington Green, take Tater Hill Road to the junction of Clark Hill Road.
- Bear left to continue onto Tater Hill Road (marked as a dead end).
- Take the first left onto Babcock Road.
- Proceed to the end of the gravel roadway and the parking lot will be on your left.

Report any problems to the East Haddam Land Use Office. 860-873-5031.

Trail Facts:

- The red trail is a 2.1 mile long loop to and from the parking lot. There are elevation changes of up to 200 feet along this trail, and some of the grades on the east end of the trail are steep.
- The blue trail is .65 miles long and proceeds mostly downhill from the parking lot until it intersects the red trail toward the northeast corner of the reserve.
- The orange trail is .05 miles long and connects the red and blue trails.
- The green trail is 0.8 miles long and heads westward from just north of the parking area through abandoned pastures before it passes through a wetland area and turns northeast and uphill, crossing a stream and intersecting with the red trail.
- The purple trail is 0.4 miles long, and connects the green trail to the northern border of the reserve. From the purple trail there is access to properties belonging to East Haddam Land Trust (Walls Way and Miller Farm Preserve).

Permitted Activities:

- Hiking
- Nature study
- Snow shoeing
- Mountain biking
- Birding
- Hunting by permit only



EAST HADDAM
YOUTH AND FAMILY
SERVICES

EAST HADDAM TRAILS

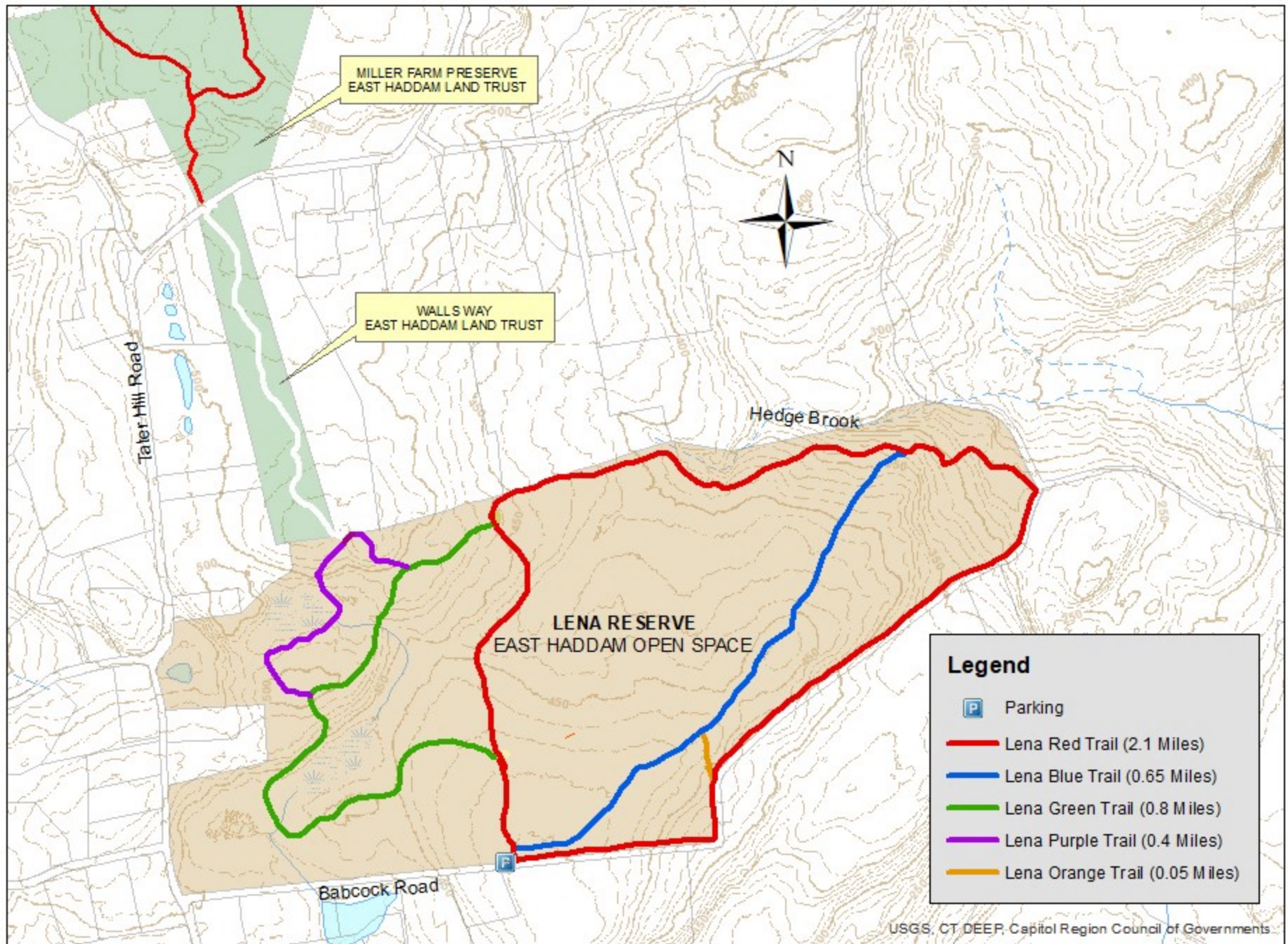
LENA RESERVE

The 212-acre Lena Reserve was purchased by the Town of East Haddam with financial assistance from the State of Connecticut and the East Haddam Land Trust. This former farm land, where many stone walls and abandoned fields are still visible, was logged prior to its acquisition by the town. This logging opened large areas of forest, allowing more sunlight to reach the forest floor, and providing a mixed habitat for many species of birds and mammals.

At present, it is possible to hike from Lena Reserve to the land trust properties to the north. In total, some 5.6 miles of connected trails pass through almost 300 acres of contiguous forest. It is hoped that further trail connections, leading to other conservation properties, can be made in the future.



LENA RESERVE



For General Reference Only

Managed by **EAST HADDAM CONSERVATION COMMISSION**

0 290 580 1,160 Feet